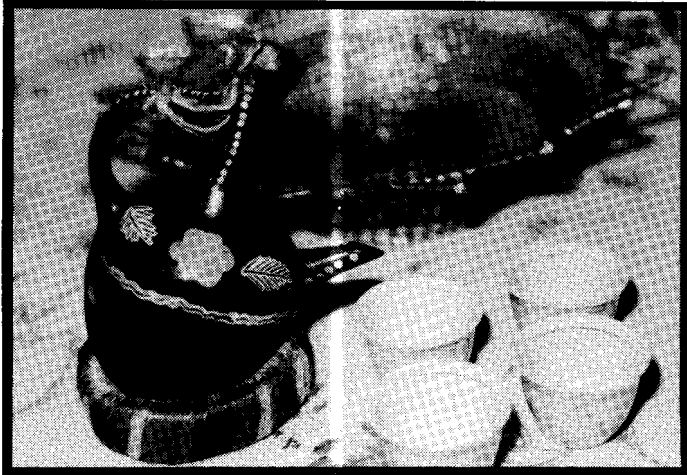
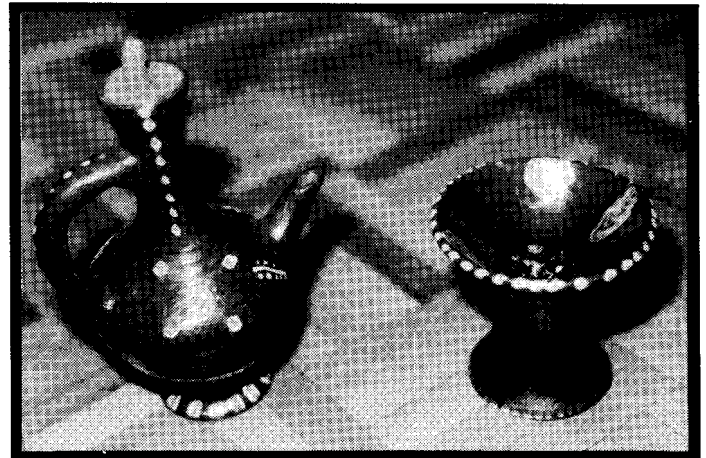


ETHIOPIAN



**Ethiopian coffee pot: hand-painted pottery
Important traditional ceremony in social setting**



Burning incense before or during the coffee ceremony is an integral part of the ceremony



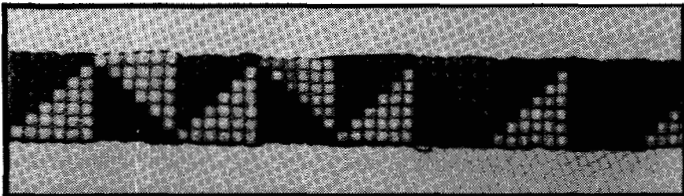
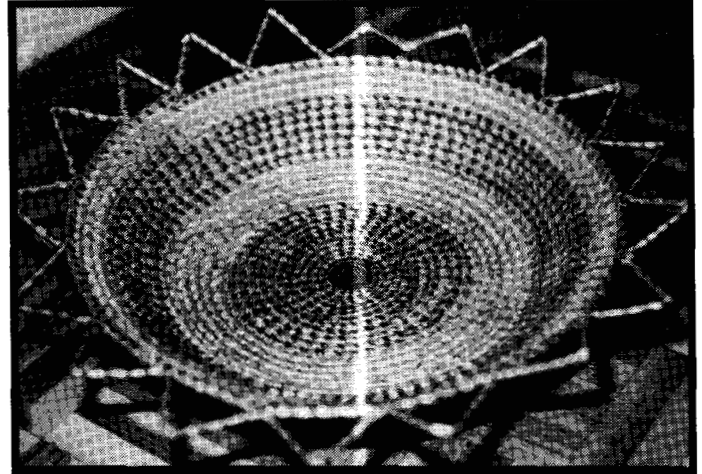
Ethiopian pottery in various designs



WOMEN'S CRAFTS

Photos by Rosanna De Rango

Traditional wicker platter used to serve bread (*ingera*) at dinner time



Beaded accessory used as a belt

Traditional wicker table vessel for meals — top lifts off where food is placed on large platter

